

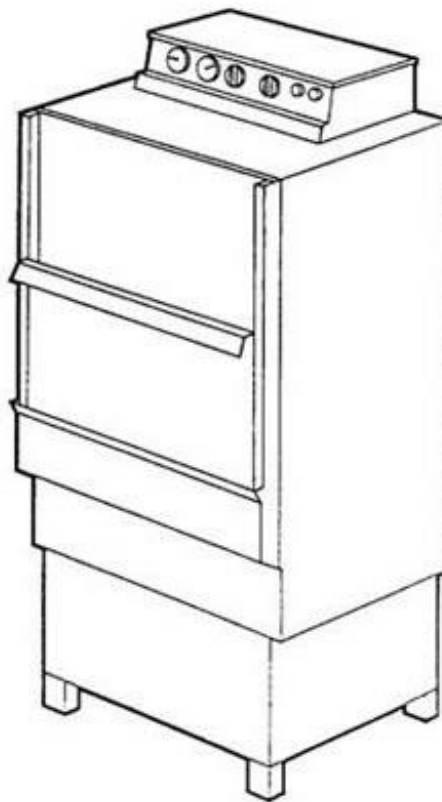
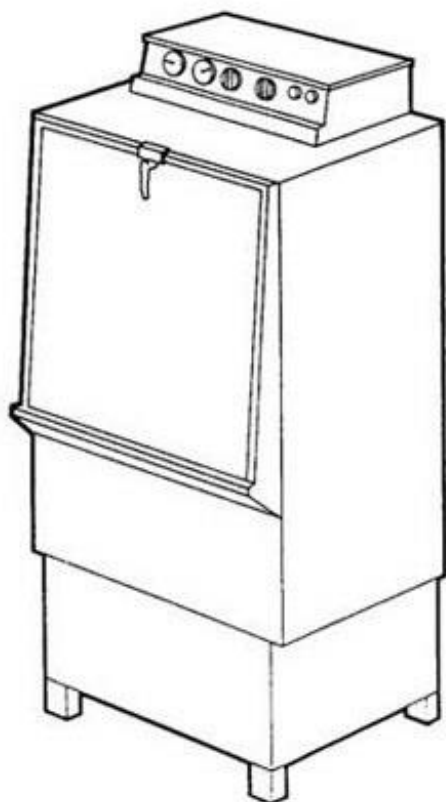
# winterhalter

## Spare Parts

### GR 62 (GR 62/1)

Edited 12/89  
Revised 03/05

Part no. 89000846



## Summary

Water inlet and connections	Page 1 and 2
Water drain, tank heating and Mediamat	Page 3 and 4
Wash system I until mach. no. 160 601	Page 5a and 5b
Wash system I as from mach. no. 160 602	Page 6a and 6b
Wash system II until series 2394/10.89	Page 7 and 8
Wash system II as from series 2463/11.89	Page 9 and 10
Wash system III	Page 11 and 12
Rinsing I	Page 13 and 14
Rinsing II until mach. no. 160 601	Page 15a and 15b
Rinsing II as from mach. no. 160 602	Page 16a and 16b
Door and rack runner	Page 17a and 17b
Lifting flap door as from 9/89	Page 18a and 18b
Panel	Page 19 and 20
Electrical parts I	Page 21 and 22
Electrical parts II	Page 23 and 24
Electrical parts III	Page 25 and 26

Please note in this list:

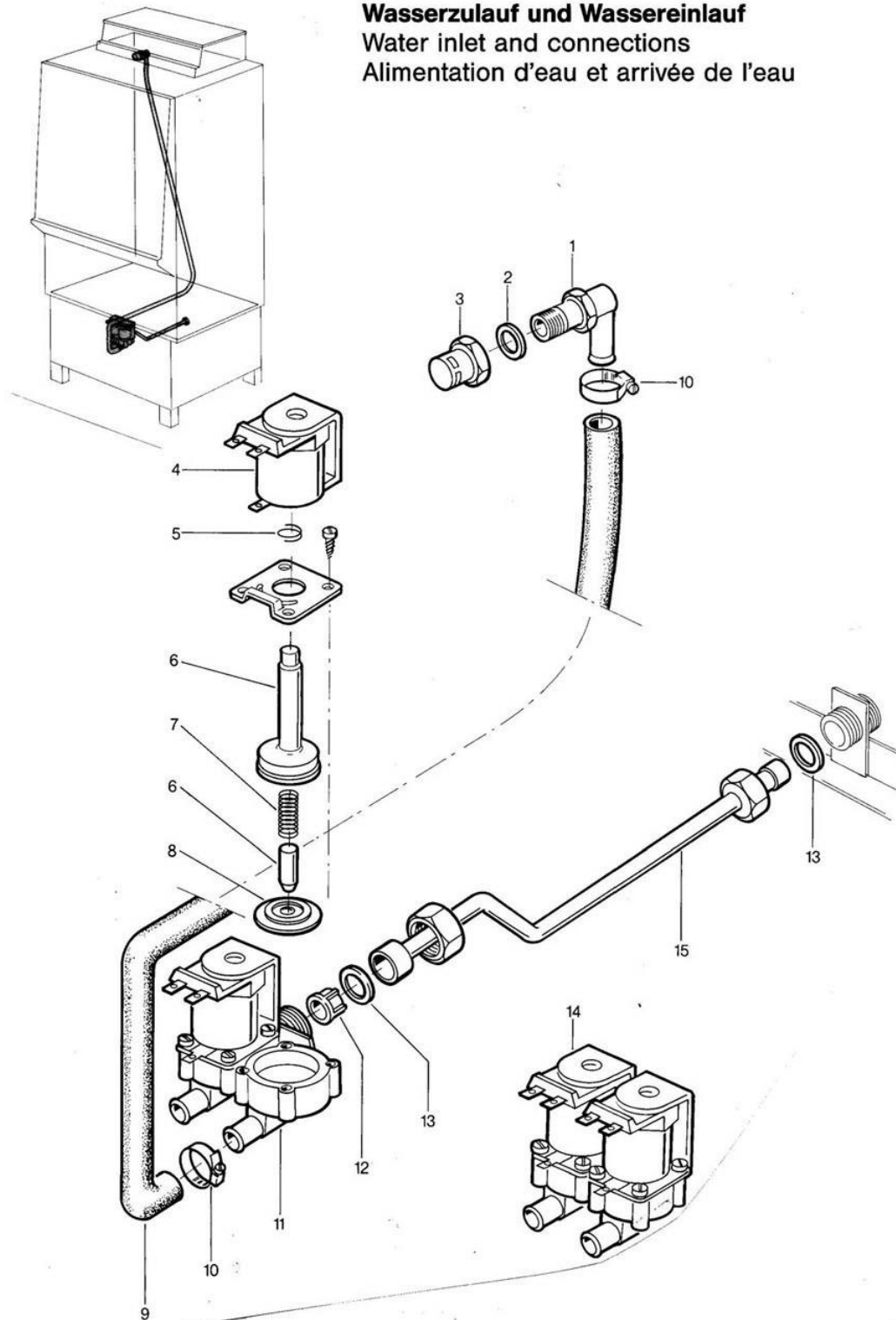
Racks and accessories see separate list.

In column „Pc.“ the necessary number is indicated, as far as more than 1 part is installed and if the part is no standard part.

Parts that have the note " Part made to order only!" are not in stock. This parts are made specially for your order and have a delivery time. They are not returnable.

## GR 62

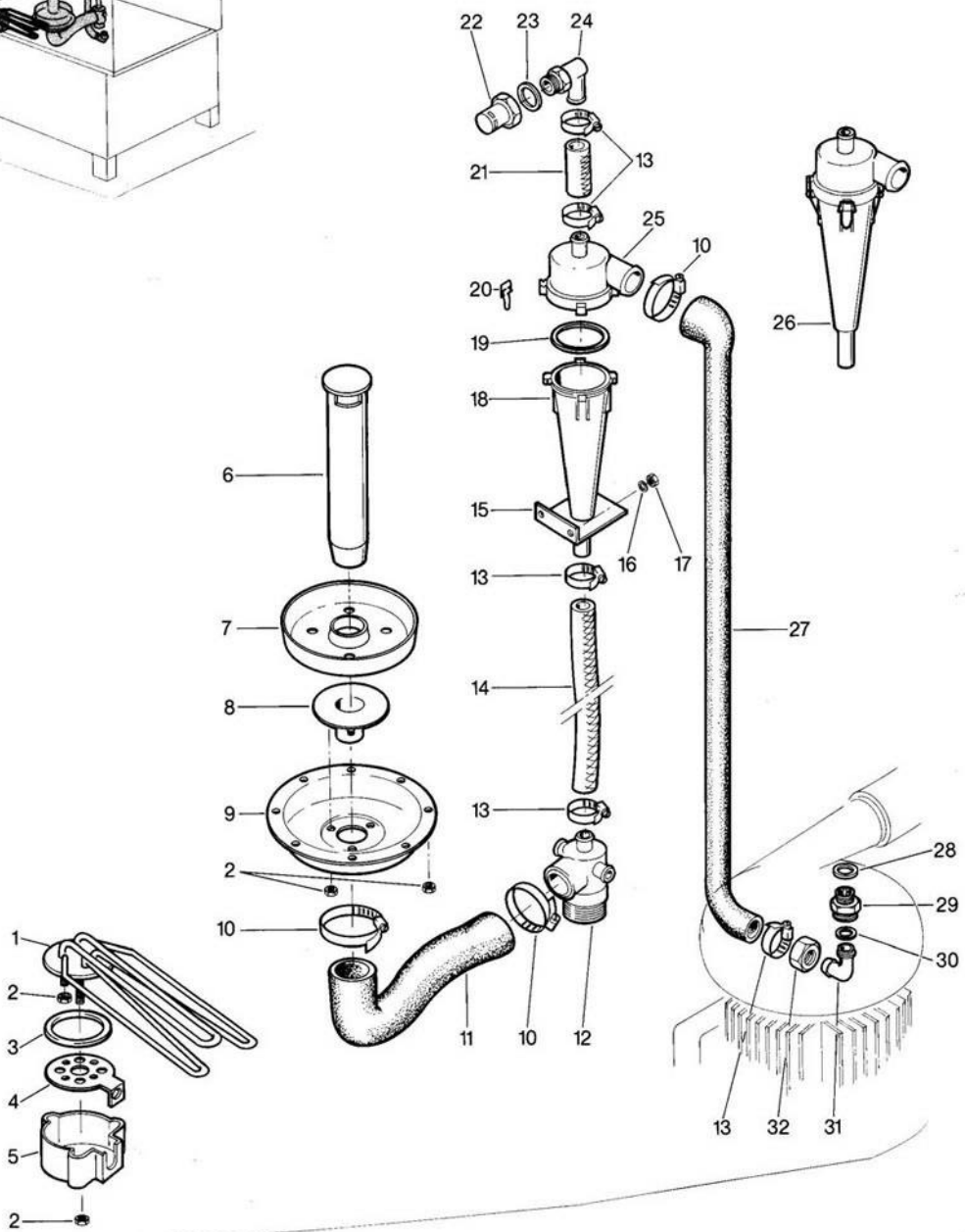
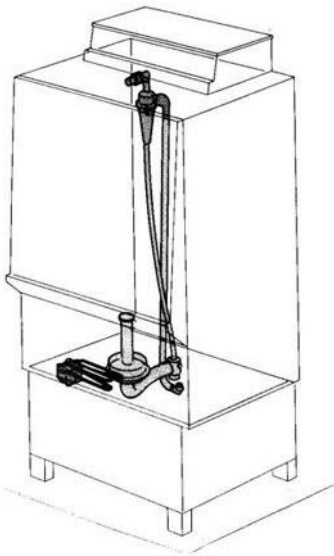
**Wasserzulauf und Wassereinlauf**  
Water inlet and connections  
Alimentation d'eau et arrivée de l'eau





### GR 62

## Wasserablauf, Tankheizung und Mediamat Water drain, tank heating and Mediamat Ecoulement d'eau, chauffage de la cuve et Médiamat



**GR 62**

Water drain, tank heating and Mediamat

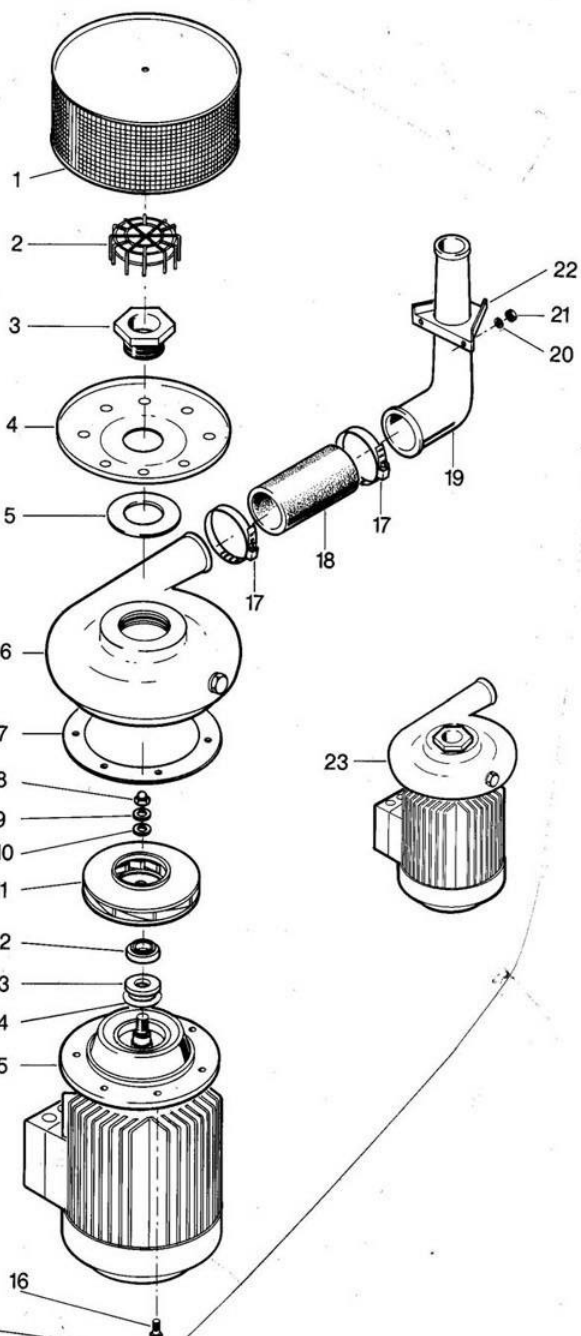
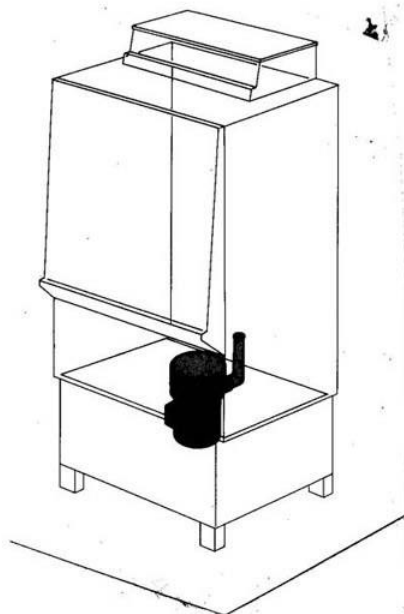
Pos.	Designation	Part no.	Pc.	Notes
1	Heating element 6 kW 220/380 V	31 03 025		
n.p.	Heating element 6 kW 240/420 V	31 03 042		
2	Hexagon nut M 5	21 01 303		
3	O-ring 43 x 7	27 07 069		
4	Heating element flange	31 03 067		
5	Cover for heating element	31 03 014		
6	Standpipe 225 long	65003719		
7	Drain sieve	55 13 031		
8	Standpipe bottom part cpl.	55 04 029		
9	Drain pot	55 13 036		
10	Hose clip $\varnothing$ 32 - $\varnothing$ 52	28 02 110		for pos. 11
11	Syphon DN 37 x DN 40	40 03 022		
12	Mediamat drain	35 01 080		
13	Hose clip $\varnothing$ 20 - $\varnothing$ 30	28 02 109		
14	Hose piece $\varnothing$ 19 x 4 x 680	40 01 016		per meter
15	Fixing angle for Mediamat	61000658		
16	Washer $\varnothing$ 4,3	22 02 202		
17	Hexagon nut M 4	21 01 302		
18	Accelerator	35 01 035		
19	O-ring $\varnothing$ 51 x 3	27 07 043		
20	Wash arm end clip	28 04 041	4	
21	Hose piece $\varnothing$ 18 x 3,5 x 65	40 02 025		per meter
22	Water inlet 1/2" BSP x D 26 x 34			
23	Seal $\varnothing$ 28 x $\varnothing$ 21 x 2,0	27 09 011		55 31 001
24	Mediamat connection 1/2" BSP	35 01 155		
n.p.	Set tank inlet	61005339		new execution
25	Head piece inlet D 30	35 01 124		
26	Mediamat cpl.	55 27 040		
27	Reducing hose	40 03 036		
28	O-ring $\varnothing$ 20 x 3,5	27 07 040		
29	Mediamat conn. nipple 1/2" x 3/4"	30 11 502		
30	Seal $\varnothing$ 24 x $\varnothing$ 19,5 x 1,5	27 09 010		
31	Mediamat connection elbow	29 06 524		
32	Coupling nut 3/4" BSP	29 07 203		

### GR 62

Waschsystem I bis Masch. Nr. 160 601

Wash system I until mach. no. 160 601

Système de lavage I jusqu'à la mach. no. 160 601





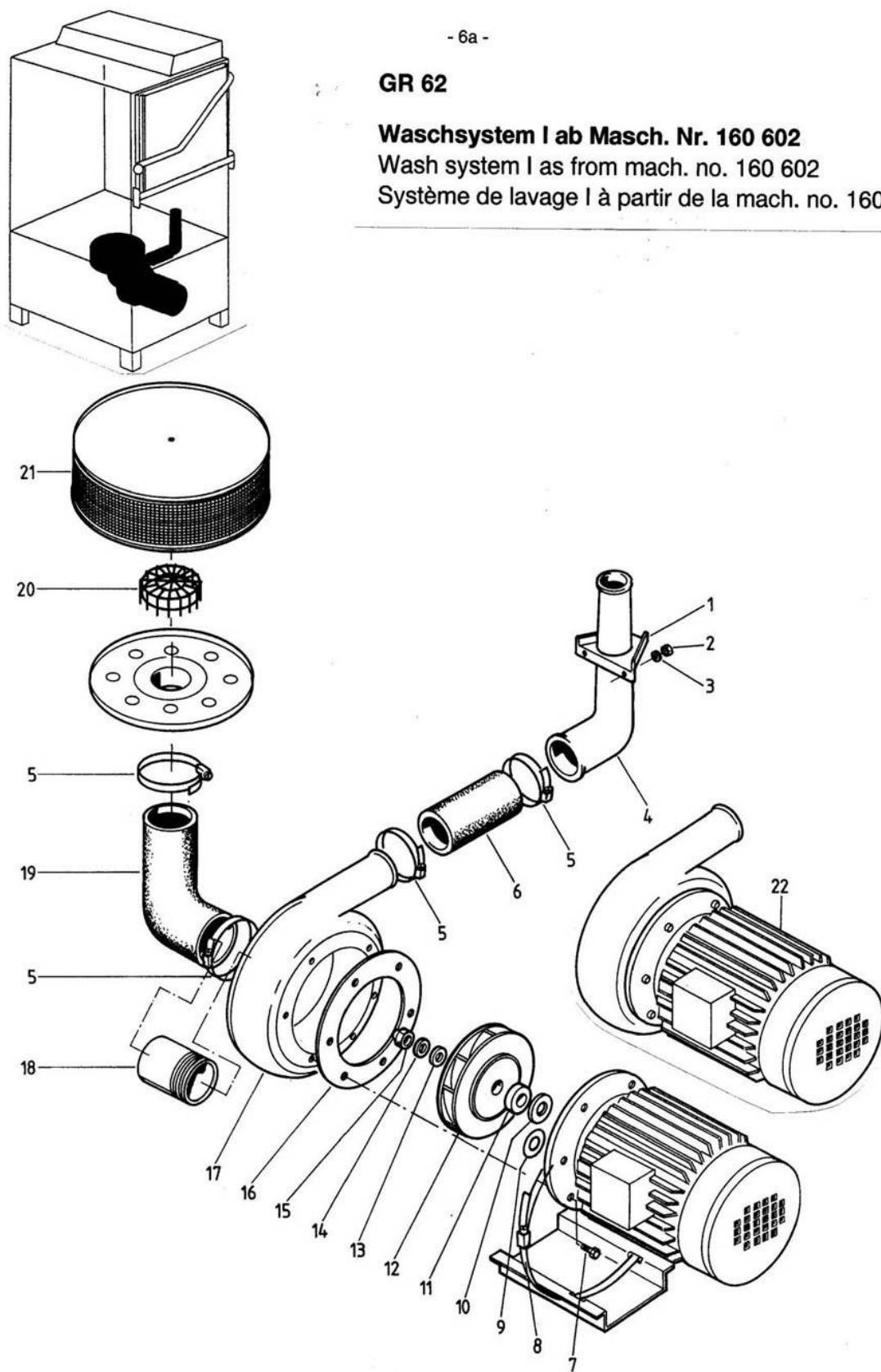


**GR 62**

**Waschsystem I ab Masch. Nr. 160 602**

Wash system I as from mach. no. 160 602

Système de lavage I à partir de la mach. no. 160 602



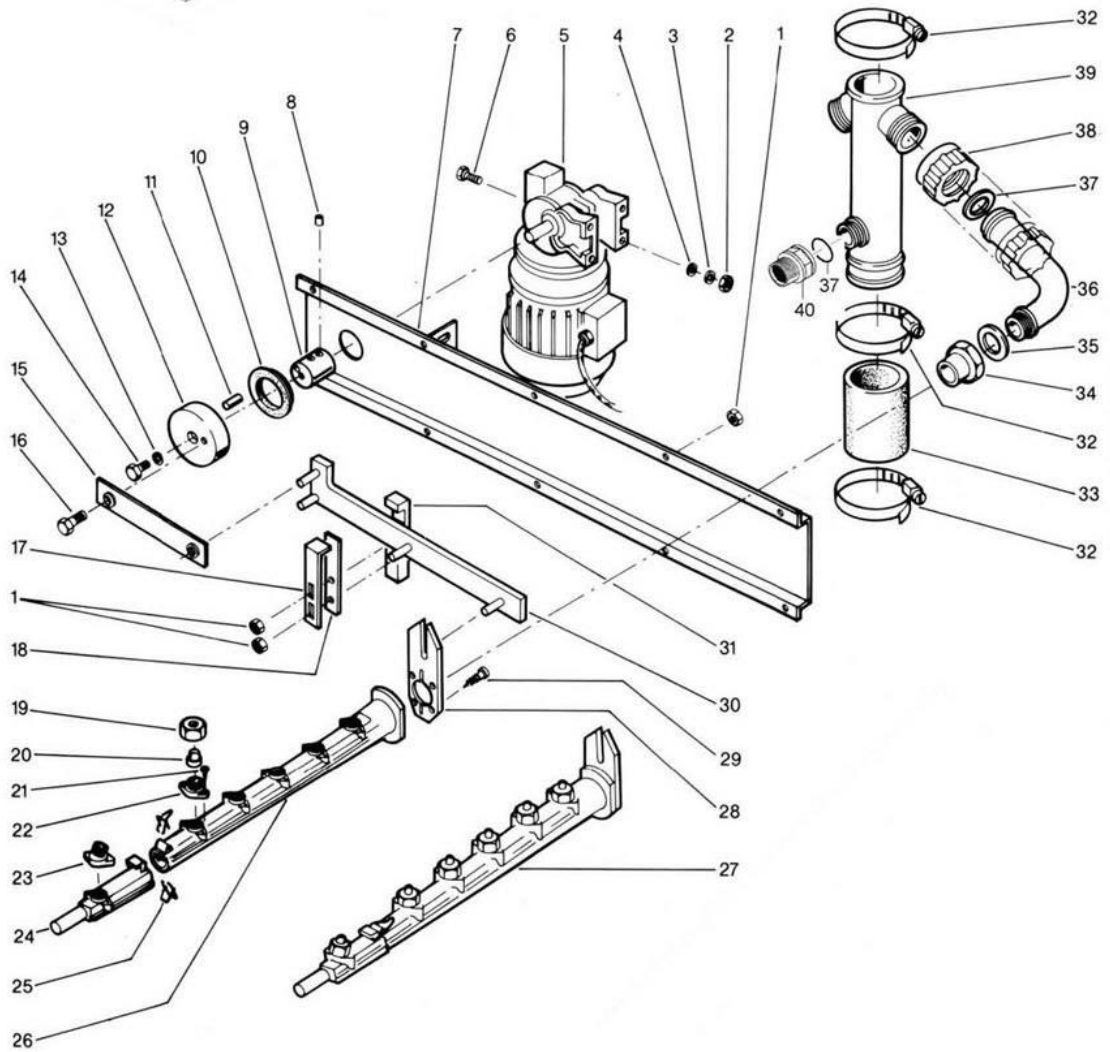
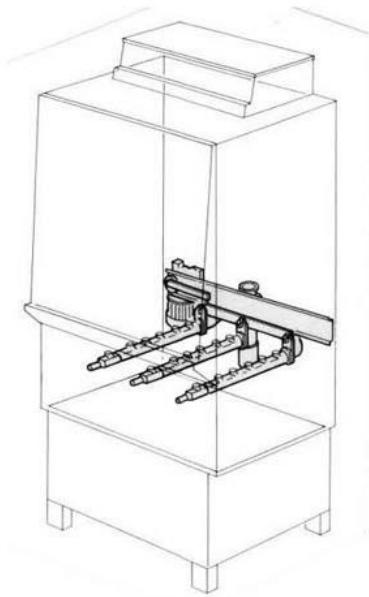
**GR 62**

Wash system I as from mach. no. 160 602

Pos.	Designation	Part no.	Pc.	Notes
1	Elbow support	65000023		
2	Hexagon nut M 6	21 05 304		self-securing
3	Washer $\varnothing$ 6,4	22 01 302		
4	Reducing elbow cpl. with reinforcing ring	55 06 051		
5	Hose clip $\varnothing$ 62 - $\varnothing$ 82	28 02 120		
6	Pump hose $\varnothing$ 60 x 8 x 140	40 02 007		per meter
7	Hexagon bolt M 6 x 18	20 01 014		
8	Hose clip $\varnothing$ 182 - $\varnothing$ 202	28 02 126		
9	Fitting disk $\varnothing$ 30 x $\varnothing$ 42 x 0,5	22 04 001		
10	Seating ring			sealing kit cpl. 80002672
11	Motor shaft seal			
12	Pump impeller $\varnothing$ 135 (50 Hz)	35 01 135		
n.p.	Pump impeller $\varnothing$ 120 (60 Hz)	55 14 140		
13	Seal M 10	22 08 506		
14	Washer $\varnothing$ 10,5	22 01 206		
15	Cap nut M 10	21 10 306		
16	Seal $\varnothing$ 190 x $\varnothing$ 143 x 1,0	27 09 037		
17	Pump housing	55 14 060		
18	Threaded nipple G 2" x 50	30 13 302		
19	Suction elbow $\varnothing$ 62 x 9	40 03 028		L 80 x 180
20	Suction elbow long $\varnothing$ 86,5 x 68	61002500		wire $\varnothing$ 2
21	Pump filter	55 13 004		
22	Pump cpl. 2,7 kW 220/380 V 50 Hz	55 14 011		
n.p.	Pump cpl. 2,7 kW 240/420 V 50 Hz	55 14 011		
n.p.	Pump cpl. 2,7 kW 200/346 V 50 Hz	84000093		part made to order only!
n.p.	Pump cpl. 2,7 kW 200/346 V 60 Hz	84000094		part made to order only!

### GR 62

**Waschsystem II bis Serie 2394/10.89**  
Wash system II until series 2394/10.89  
Système de lavage II jusqu'à la série 2394/10.89



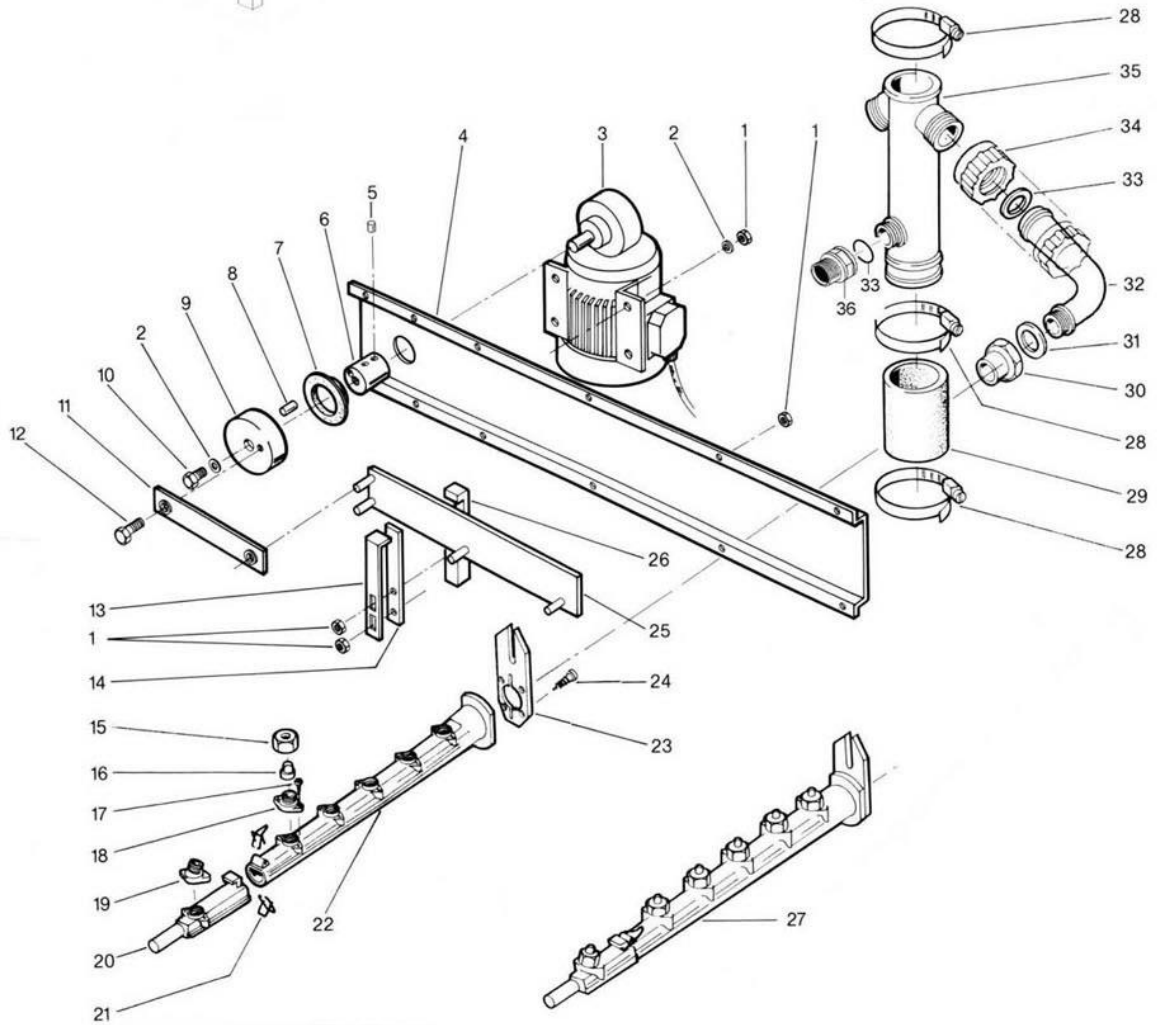
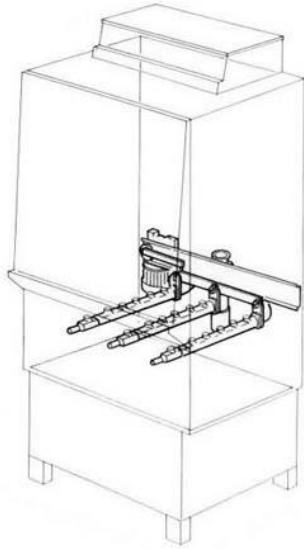
**GR 62**

Wash system II until series 2394/10.89

Pos.	Designation	Part no.	Pc.	Notes
1	Hexagon nut M 5	21 05 302		self-securing
2	Hexagon nut M 6	21 01 304		
3	Spring washer for M 6	23 03 300		
4	Washer $\varnothing$ 6,4	22 01 302		
5	Gear motor 0,25 kW 220-240 V 50/60 Hz	31 16 029		not exchangeable against 31 16 032
6	Hexagon screw M 6 x 16	20 01 306		
7	Reinforcing fixing plate cpl.	65000675		part made to order only!
8	Grub-screw M 6 x 8	20 30 304		
9	Driving bush	65000024		
10	Shaft gasket 45 A	27 08 003		
11	Cylinder pin D 6 x 20	26 02 305		
12	Eccentric pulley; D70 X 17; HUB 58	65002824		
13	Washer $\varnothing$ 5,3	22 01 300		
14	Hexagon screw M 5 x 16	20 01 309		
15	Connecting plate	55 07 060		
16	Crank pin M 8 x 23 SW 19	55 08 040		
17	Clamping rail	65001728	2	
18	Shim for bearer	65001451	2	
19	Coupling nut for water jet	29 10 532	18	
20	Wide spread jet	29 10 509	18	white
21	Sheet metal screw 3,5 x 13	20 20 304	36	white
22	Jet bottom part 1/2" BSP	29 10 510	15	
23	Jet bottom part (angled)	65000043	3	made of 29 10 537
24	End piece	35 01 014	3	
25	Wash arm end clip	28 04 041	3	
26	Wash arm		6	replaced by pos.27
27	Bottom wash arm cpl.	65000021	3	
28	Wash arm retaining plate	55 07 048	3	
29	Sheet metal screw 3,9 x 16	20 20 306	3	
30	Connecting arm cpl.	65000022		part made to order only!
31	Sliding block for conn. arm	55 08 038		part made to order only!
32	Hose clip $\varnothing$ 47 - $\varnothing$ 67	28 02 115	2	
33	Pump hose $\varnothing$ 50 x 8 x 100	40 02 006		per meter
34	Bush	65001677		
35	Seal $\varnothing$ 33 x $\varnothing$ 26,5 x 2,5	27 01 003	3	
36	Manifold elbow	35 01 005		
37	O-ring $\varnothing$ 24 x 3	27 07 066	2	
38	Coupling nut	35 01 004		
39	Wash manifold bottom section	35 01 018	2	
40	Double nipple; G 3/4" X 40,5; SW32	35 01 019		

### GR 62

**Waschsystem II** ab Serie 2463/11.89  
Wash system II from series 2463/11.89  
Système de lavage II à partir de la  
serie 2463/11.89



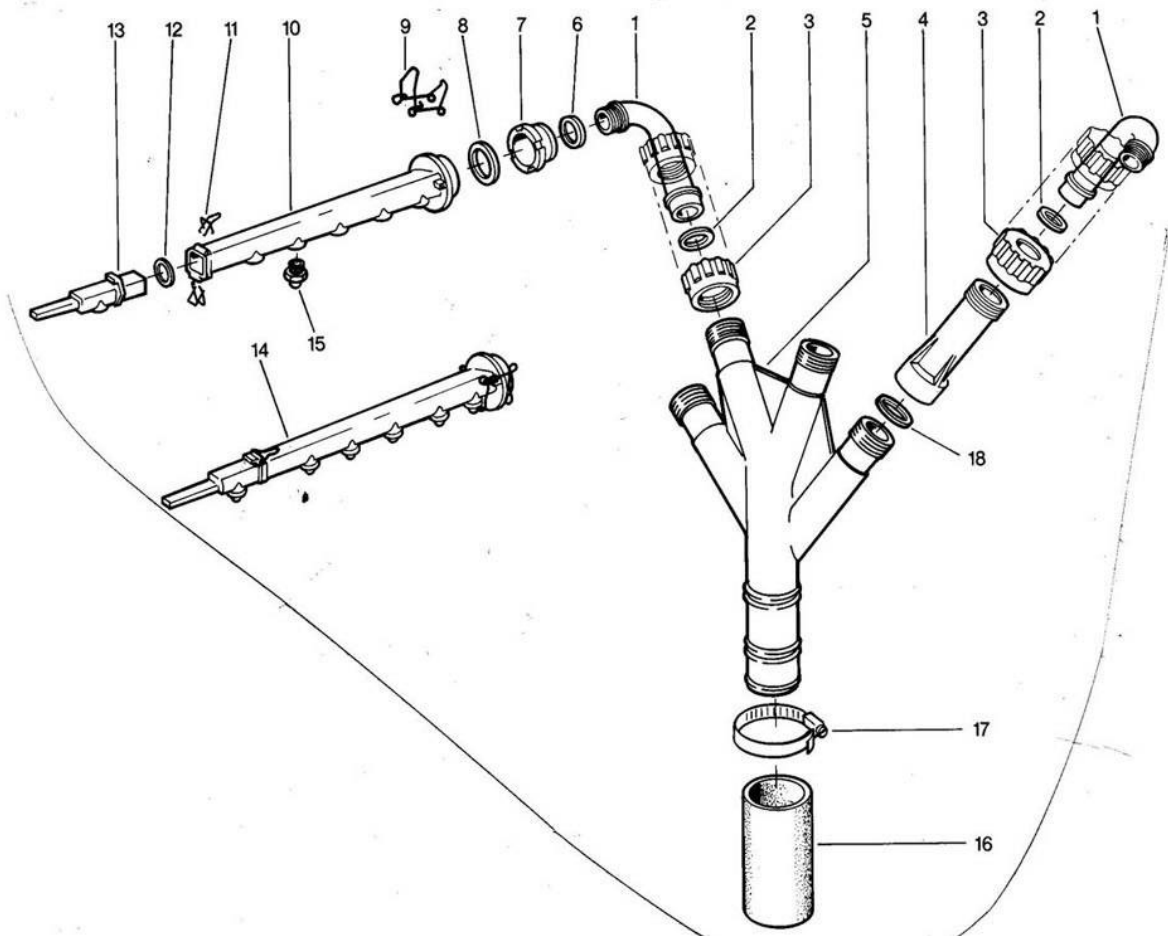
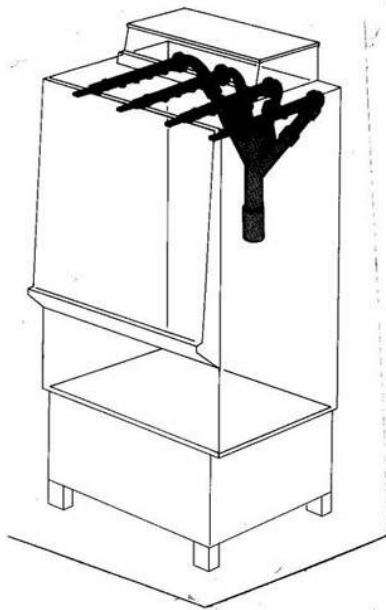
**GR 62**

Wash system II as from series 2463/11.89

Pos.	Designation	Part no.	Pc.	Notes
1	Hexagon nut M 5	21 05 302		self-locking
2	Washer $\varnothing$ 5,3	22 01 300		
3	Gear motor 0,09 kW	31 16 032		not exchangeable against 3116029
4	Reinforcing fixing plate	65000013		part made to order only!
5	Grub-screw M 6 x 8	20 30 304		
6	Driving bush	65001917		
7	Shaft gasket	27 08 003		
8	Cylinder pin $\varnothing$ 6 x 20	26 02 305		
9	Eccentric pulley; D70 X 17; HUB 58	65002824		
10	Hexagon screw M 5 x 16	20 01 309		
11	Connecting plate	55 07 060		
12	Crank pin	55 08 040		
13	Clamping rail	65000030	2	
14	Shim for bearer	65001724	2	
15	Coupling nut for wash jet	29 10 532	18	
16	Wide spread jet	29 10 509	18	white
17	Sheet metal screw 3,5 x 13	20 20 304		
18	Jet bottom part 1/2" BSP	29 10 510	15	white
19	Jet bottom part	65000043	3	
20	End piece	35 01 014	3	
21	Wash arm end clip	28 04 041	6	
22	Wash arm		3	replaced by pos.27
23	Wash arm retaining plate	55 07 048	3	
24	Sheet metal screw 3,9 x 16	20 20 306		
25	Connecting arm cpl.	65001694		
26	Sliding block for connecting arm	65001541	2	
27	Bottom wash arm cpl.	65000021	3	
28	Hose clip $\varnothing$ 47 - $\varnothing$ 67	28 02 115		
29	Pump hose $\varnothing$ 50 x 8 x 100	40 02 006		per meter
30	Bush	65001677	3	
31	Seal $\varnothing$ 33 x $\varnothing$ 26,5 x 2,5	27 01 003		
32	Manifold elbow	35 01 005	2	
33	O-ring $\varnothing$ 24 x 3	27 07 066		
34	Coupling nut	35 01 004	2	
35	Wash manifold bottom part	35 01 018		
36	Double nipple; G 3/4" X 40,5; SW32	35 01 019		

GR 62

**Waschsystem III**  
Wash system III  
Système de lavage III



**GR 62**

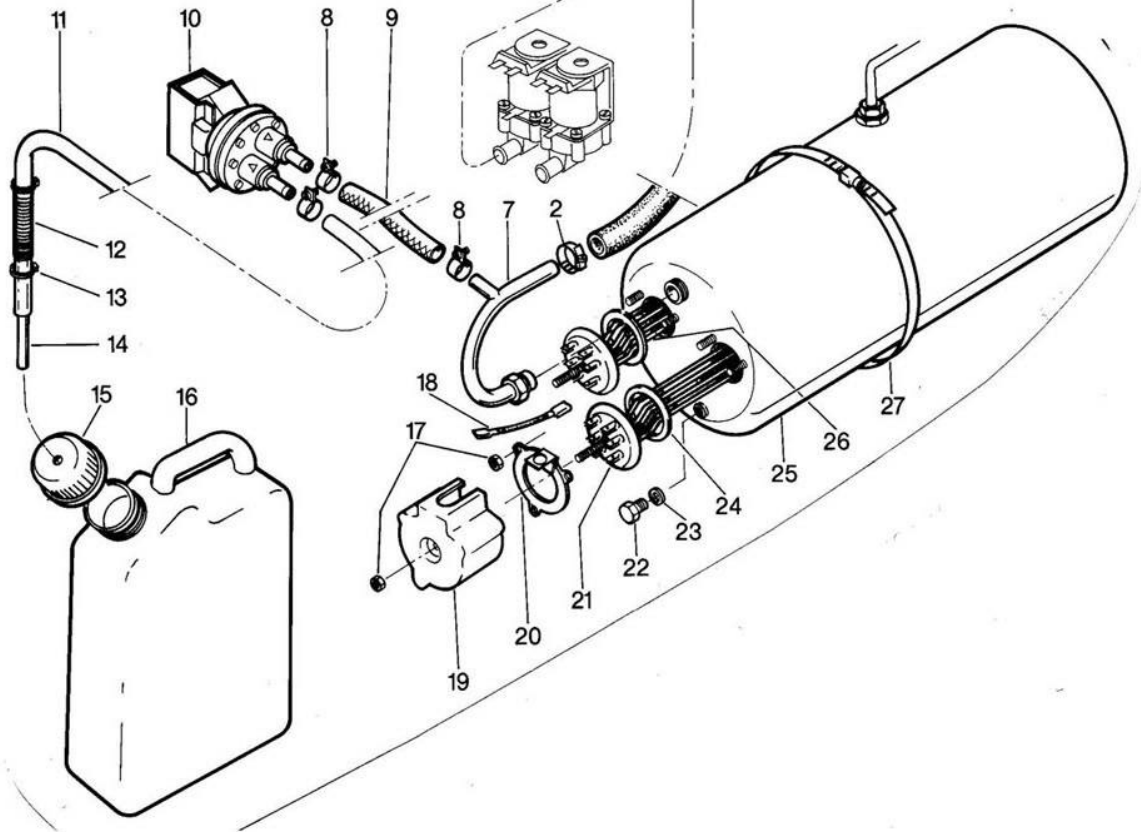
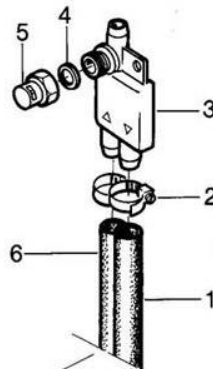
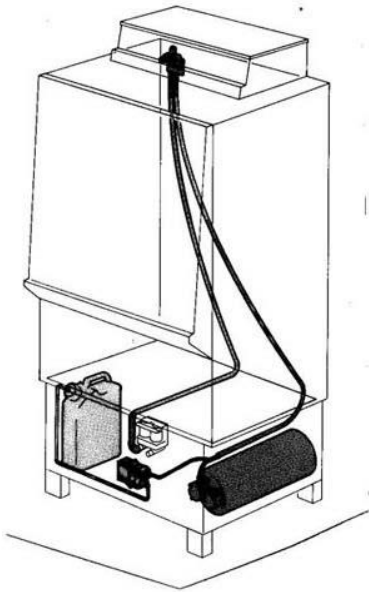
Wash system III

Pos.	Designation	Part no.	Pc.	Notes
1	Manifold elbow	35 01 005	4	
2	O-ring ø 24 x 3	27 07 066	4	
3	Coupling nut	35 01 004	4	
4	Extension piece	35 01 003	2	
5	Wash manifold top section	35 01 017		
6	Seal ø 33 x ø 26,5 x 2,5	27 01 003		
7	Coupling nut	35 01 006	4	
8	O-ring ø 27 x 4	27 07 016	4	
9	Wash arm clip	28 04 040	4	
10	Wash arm		4	replaced by pos.14
11	Wash arm end clip	28 04 041	8	
12	O-ring ø 18 x 1,5	27 07 039		
13	Wash arm end piece 90°	35 01 015	4	
14	Top wash arm cpl.	65000034	4	
15	Slot jet	29 10 514	20	
16	Pump hose ø 50 x 8 x 150	40 02 006		per meter
17	Hose clip ø 47 - ø 67	28 02 115		
18	Seal ø 39 x ø 32 x 2	27 02 001	4	



GR 62

**Nachspülung I**  
Rinsing I  
Rinçage I



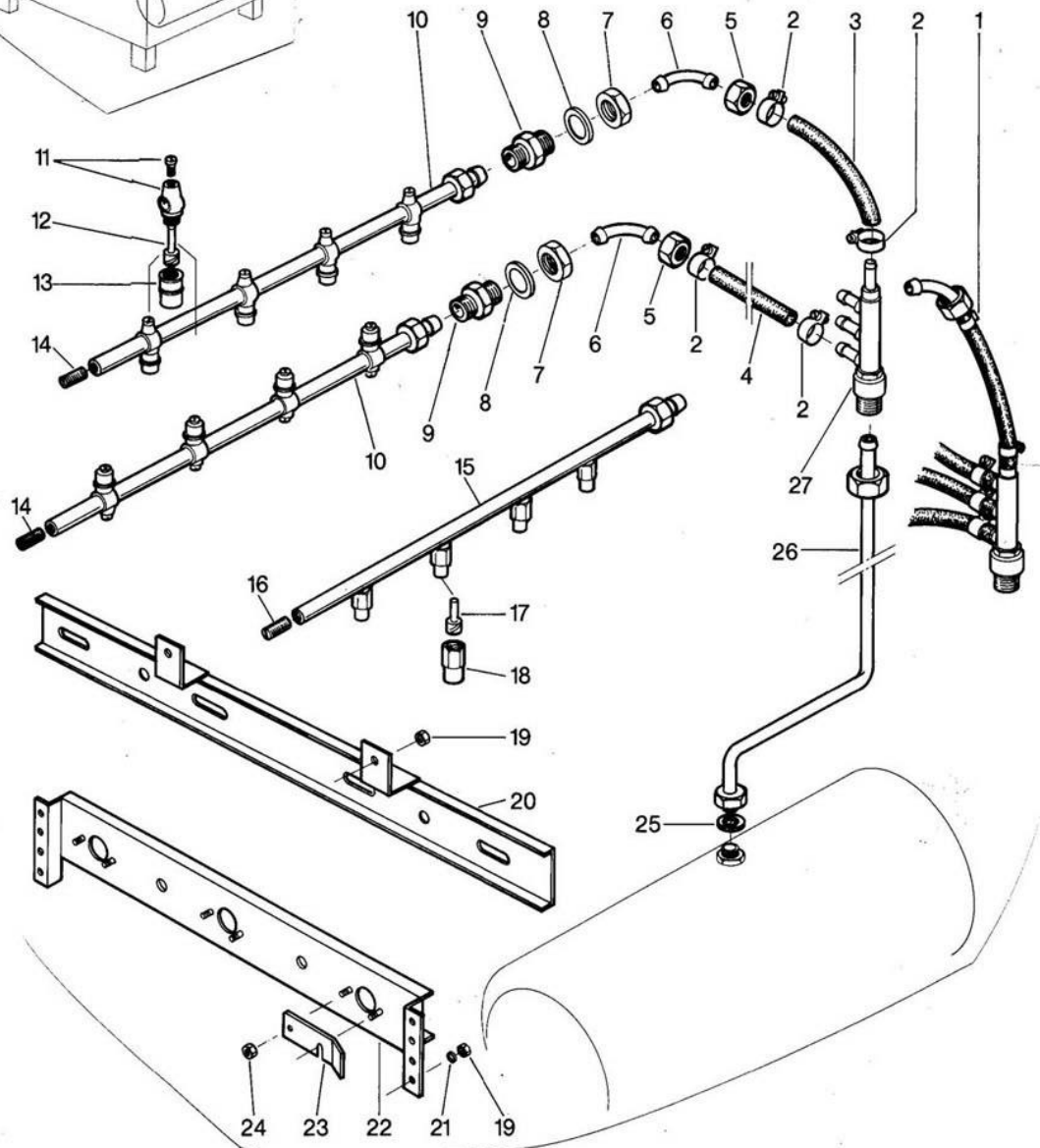
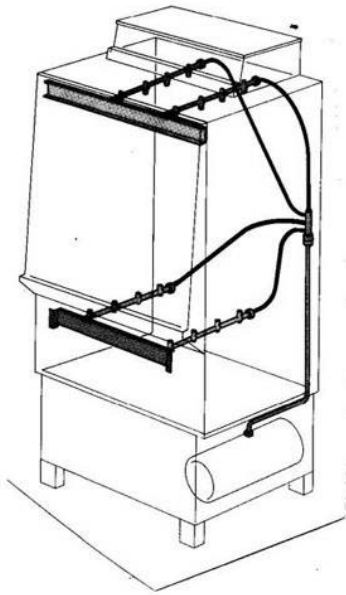


### GR 62

**Nachspülung II bis Masch. Nr. 149 350**

Rinsing II until mach. no. 149 350

Rinçage II jusqu'à la mach. no. 149 350



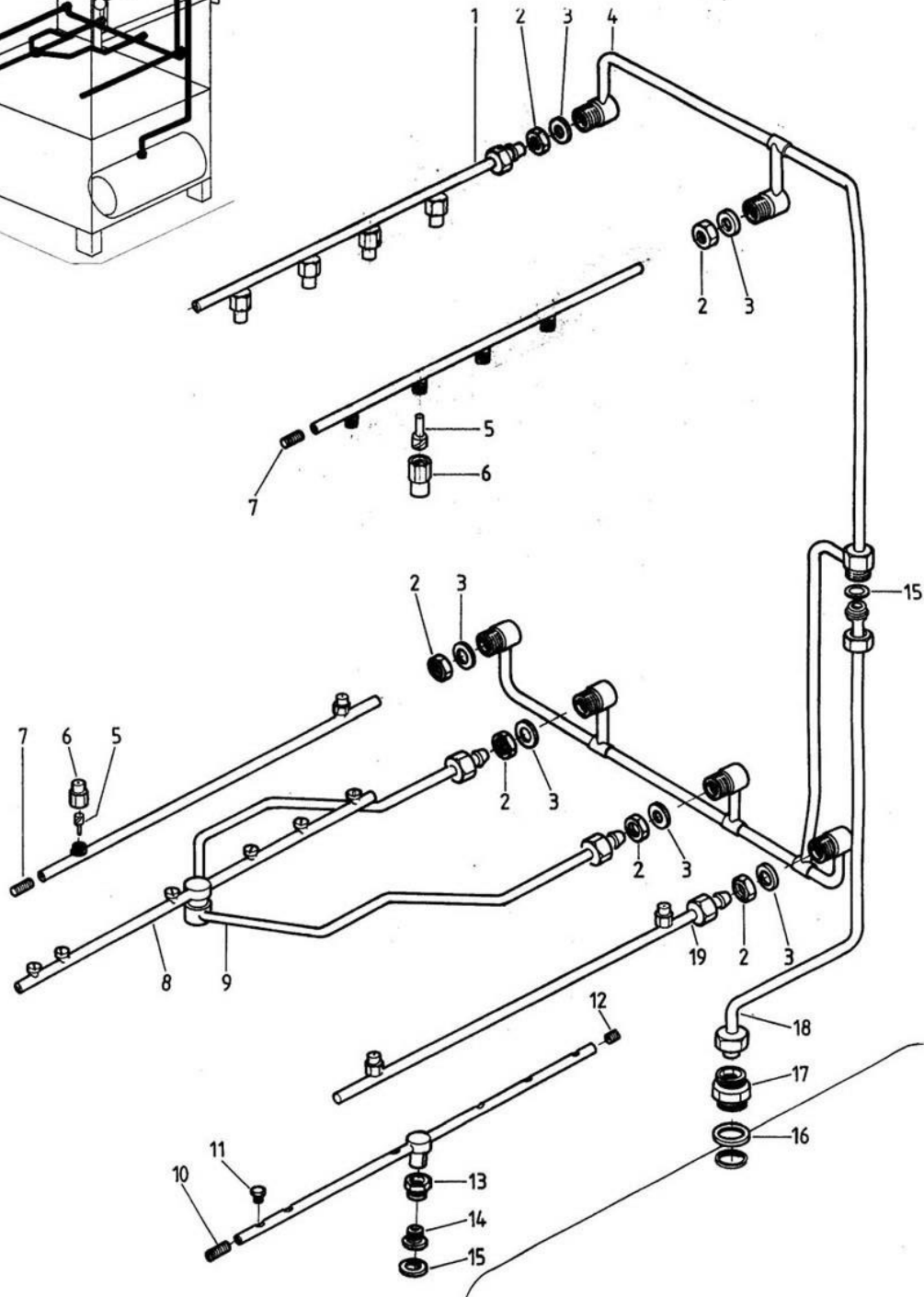
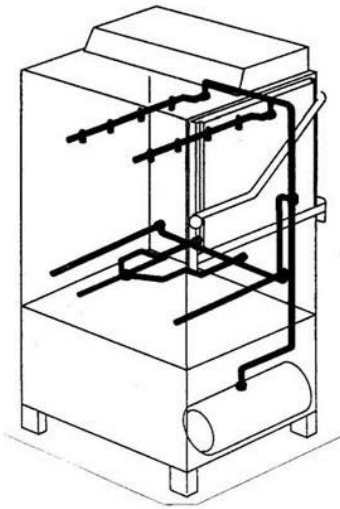


### GR 62

**Nachspülung II ab Masch Nr. 154 401**

Rinsing II as from mach. no. 154 401

Rinçage II à partir de la mach. no. 154 401

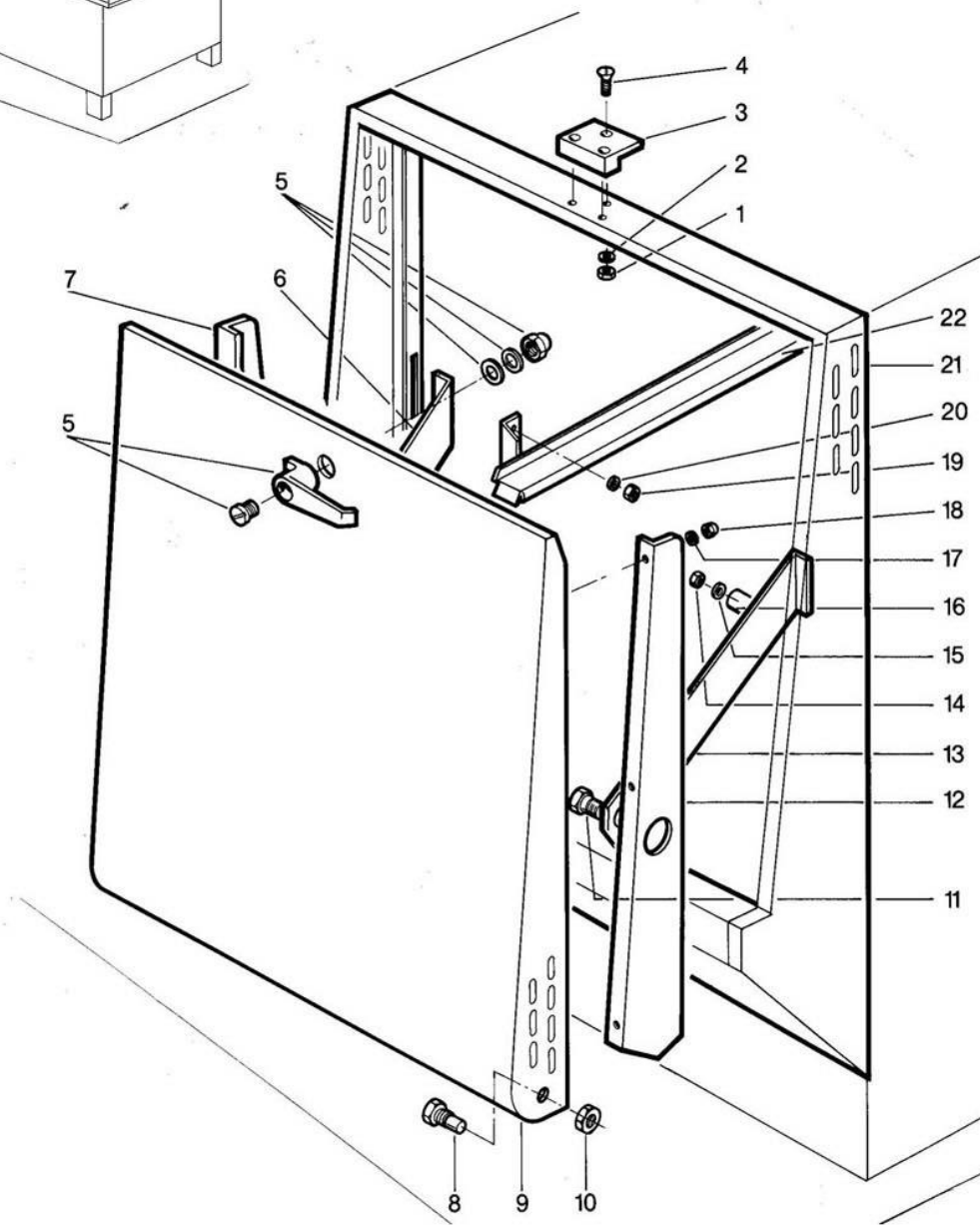
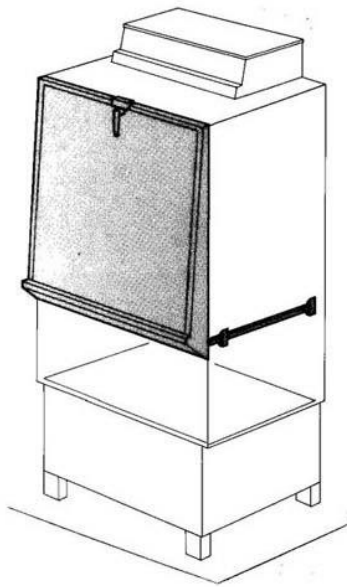




## GR 62

### Türe und Korbführung Door and rack guide Porte et guidage des paniers

---





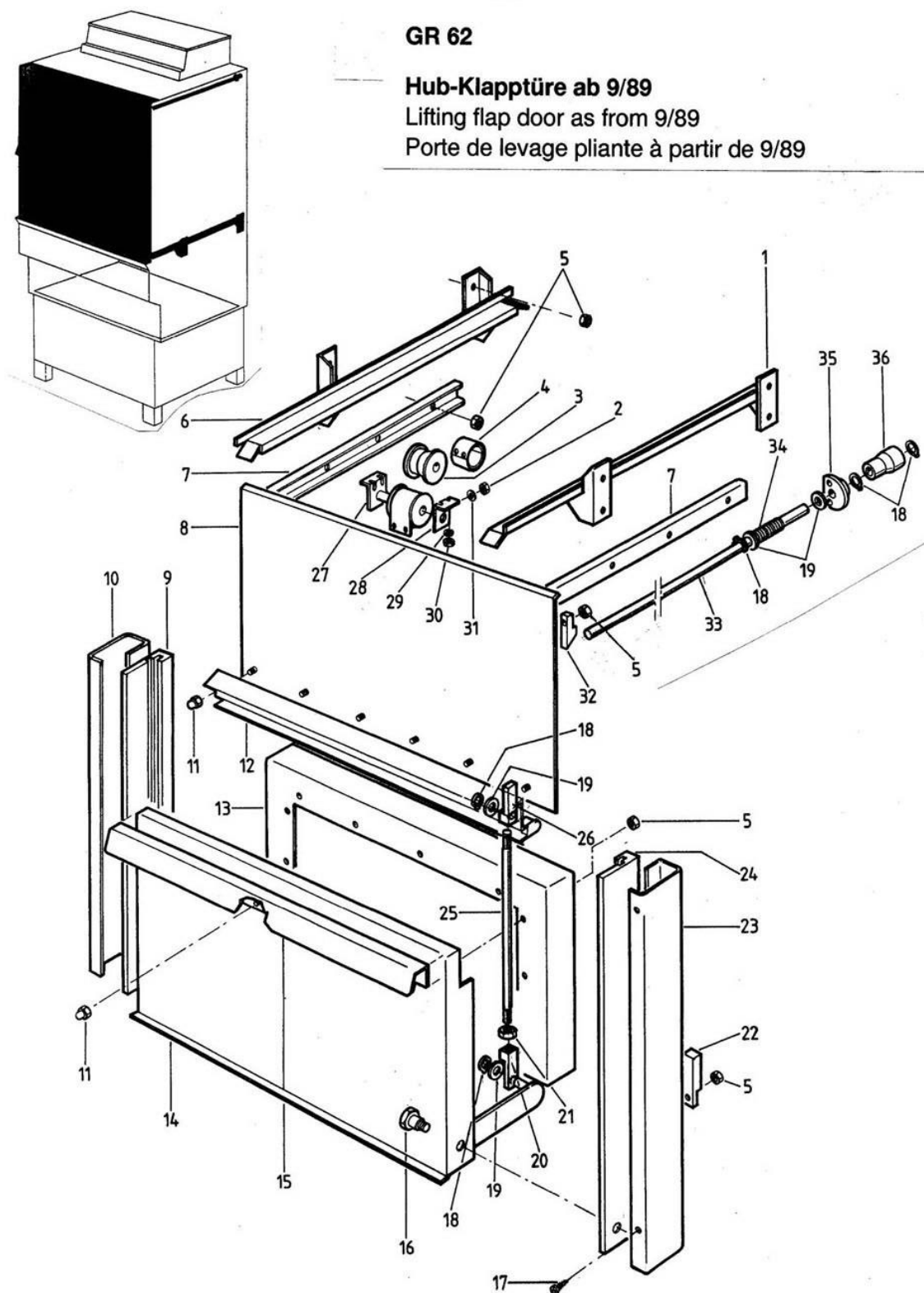


**GR 62**

**Hub-Klapptüre ab 9/89**

Lifting flap door as from 9/89

Porte de levage pliante à partir de 9/89



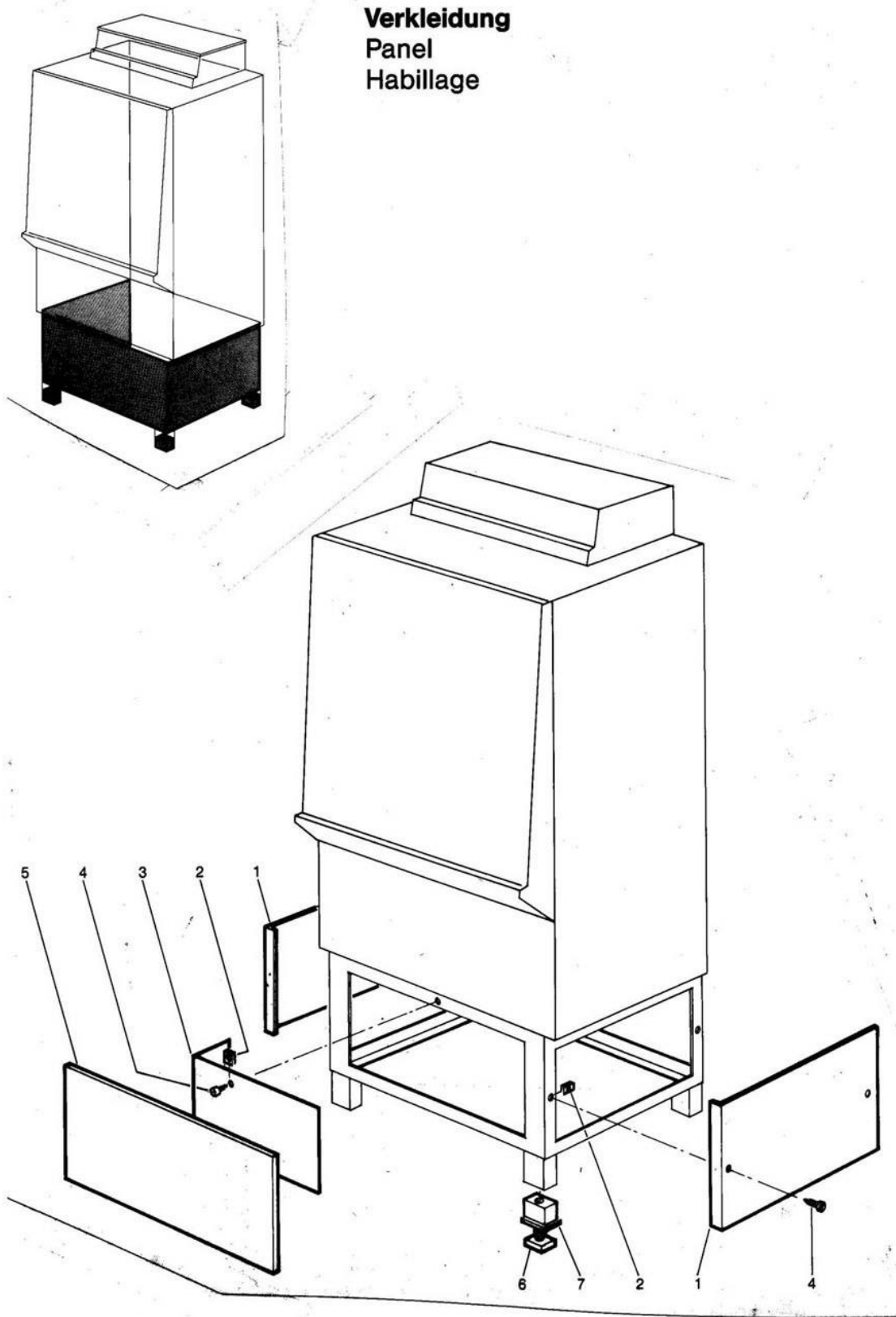
**GR 62/1**

Lifting flap door as from 9/89

Pos.	Bezeichnung	Teile-Nr.	St.	Bemerkung
1	Rack support rail right cpl.	65001610		part made to order only!
2	Hexagon nut M 4	21 01 302		
3	Pulley $\varnothing$ 90 x 24	35 01 160		
4	Roller spring 1400 x 40 x 0,7	28 04 024		
5	Hexagon nut M 6	21 05 304		self-securing
6	Rack support rail left cpl.	65001611		part made to order only!
7	Reinforcing profile for lateral panel	65001696	2	part made to order only!
8	Door leaf	65001551		part made to order only!
9	Guide profile left	65001621		
10	Door guide left cpl.	65001560		part made to order only!
11	Cap nut M 6	21 10 304		
12	Insert rail cpl.	65001601		part made to order only!
13	Door rack opening	65001613		part made to order only!
14	Door plate	65001555		part made to order only!
15	Door handle	65001614		part made to order only!
16	Bearing bolt	65001618		
17	Sheet-metal screw 2,9 x 9,5	20 20 309		
18	Locking ring	23 10 304		
19	Washer $\varnothing$ 8,4	22 01 303		
20	Adjusting button	65001616		right-hand thread
21	Hexagon nut M 8	21 01 305		
22	Lever stop	65001623		
23	Door guide right cpl.	65001559		part made to order only!
24	Guide profile right	65001620		
25	Door drive rod	65001615		
26	Adjusting button	65001617		left-hand thread
27	Spring bracket cpl.	65000406		
28	Bearer angle	65000414		
29	Washer 1,0 x $\varnothing$ 22 x $\varnothing$ 5,2	65000247		
30	Hexagon nut M 5	21 01 303		
31	Washer $\varnothing$ 4,3	22 02 302		
32	Stopping wedge for limit switch rod	65001734		
33	Switching rod	60000784		
34	Retaining support	28 04 011		
35	Bearing for limit switch	55 15 129		
36	Trip cam $\varnothing$ 18 x 27	28 14 204		

GR 62

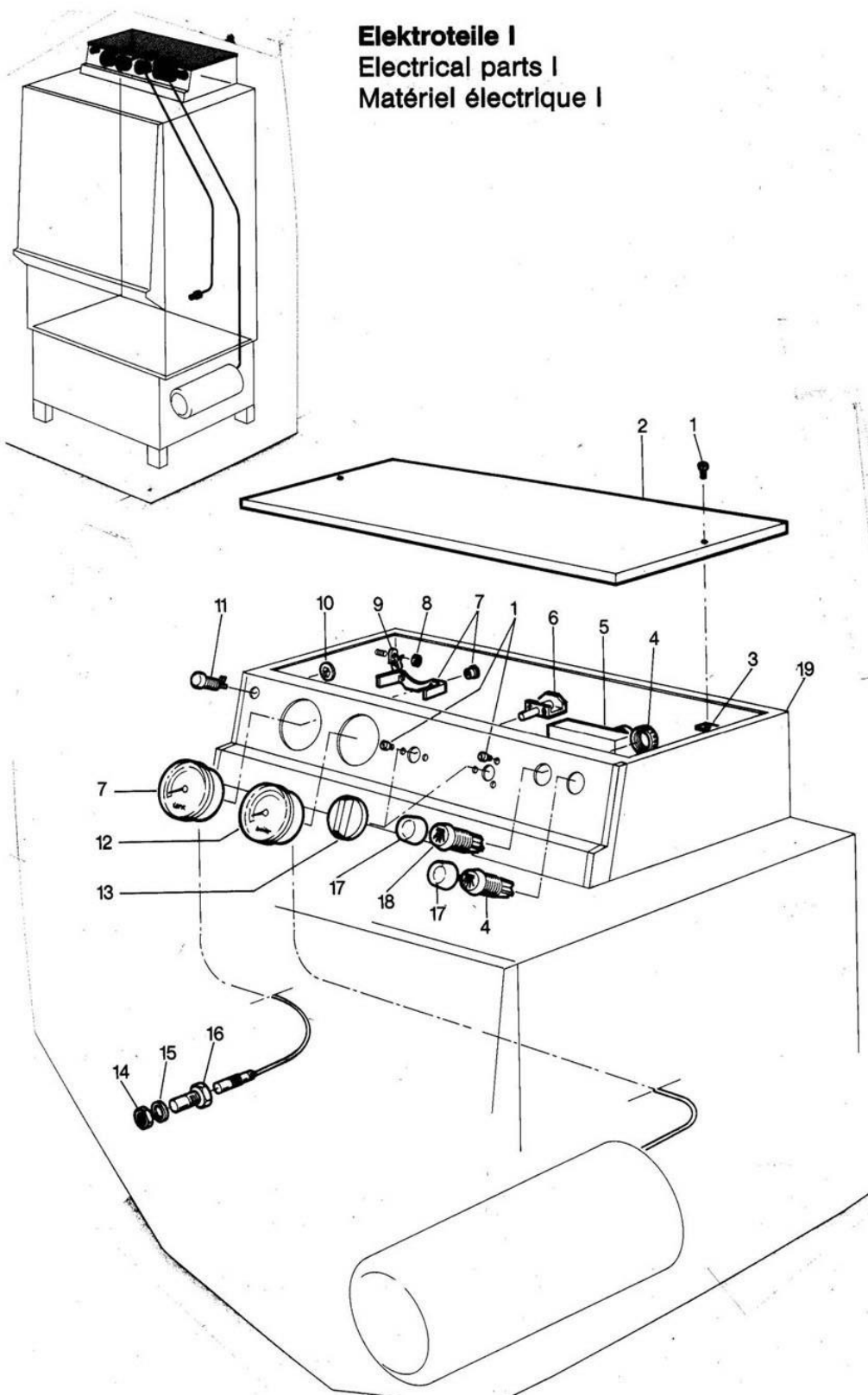
**Verkleidung  
Panel  
Habillage**





### GR 62

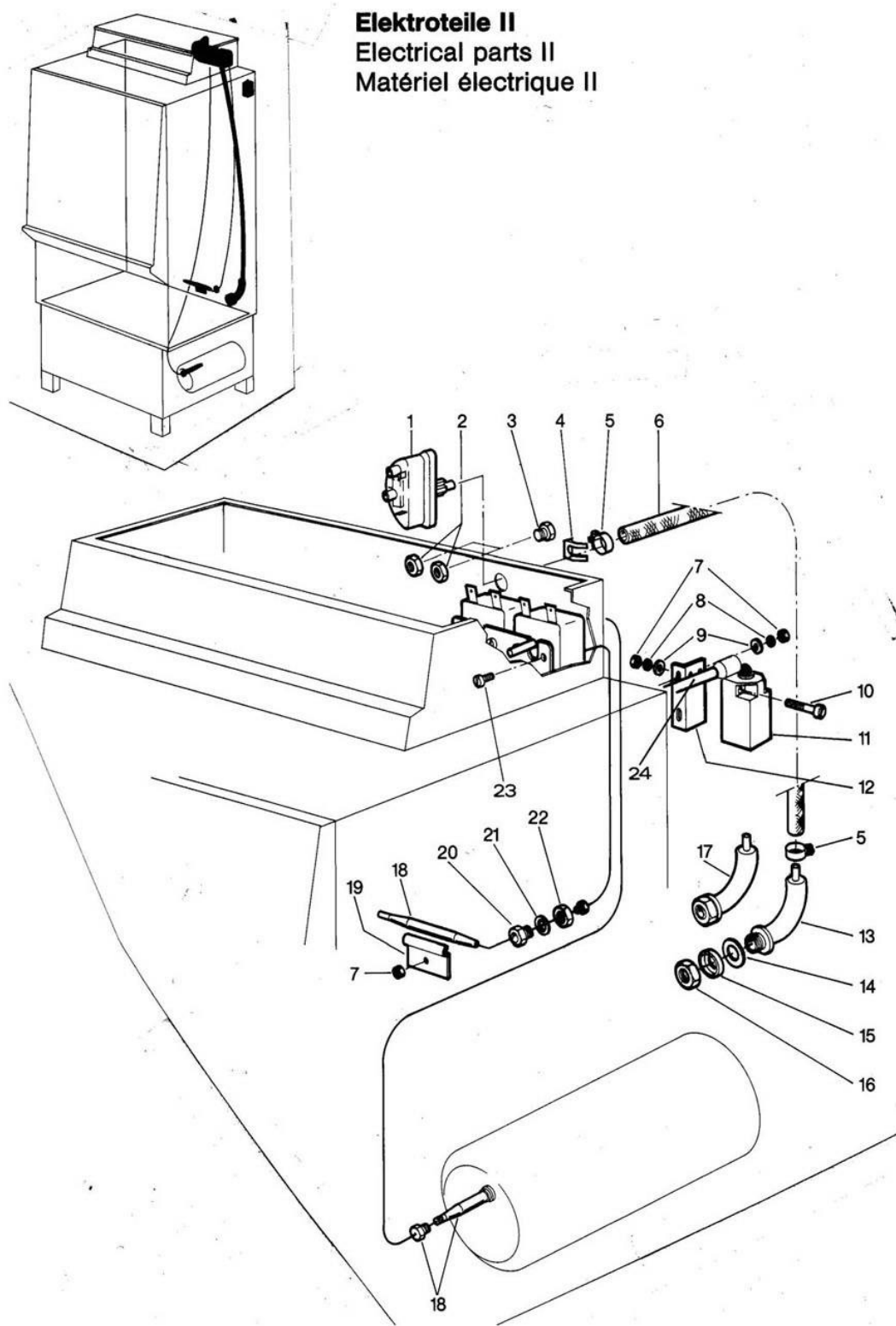
#### Elektroteile I Electrical parts I Matériel électrique I





### GR 62

### Elektroteile II Electrical parts II Matériel électrique II

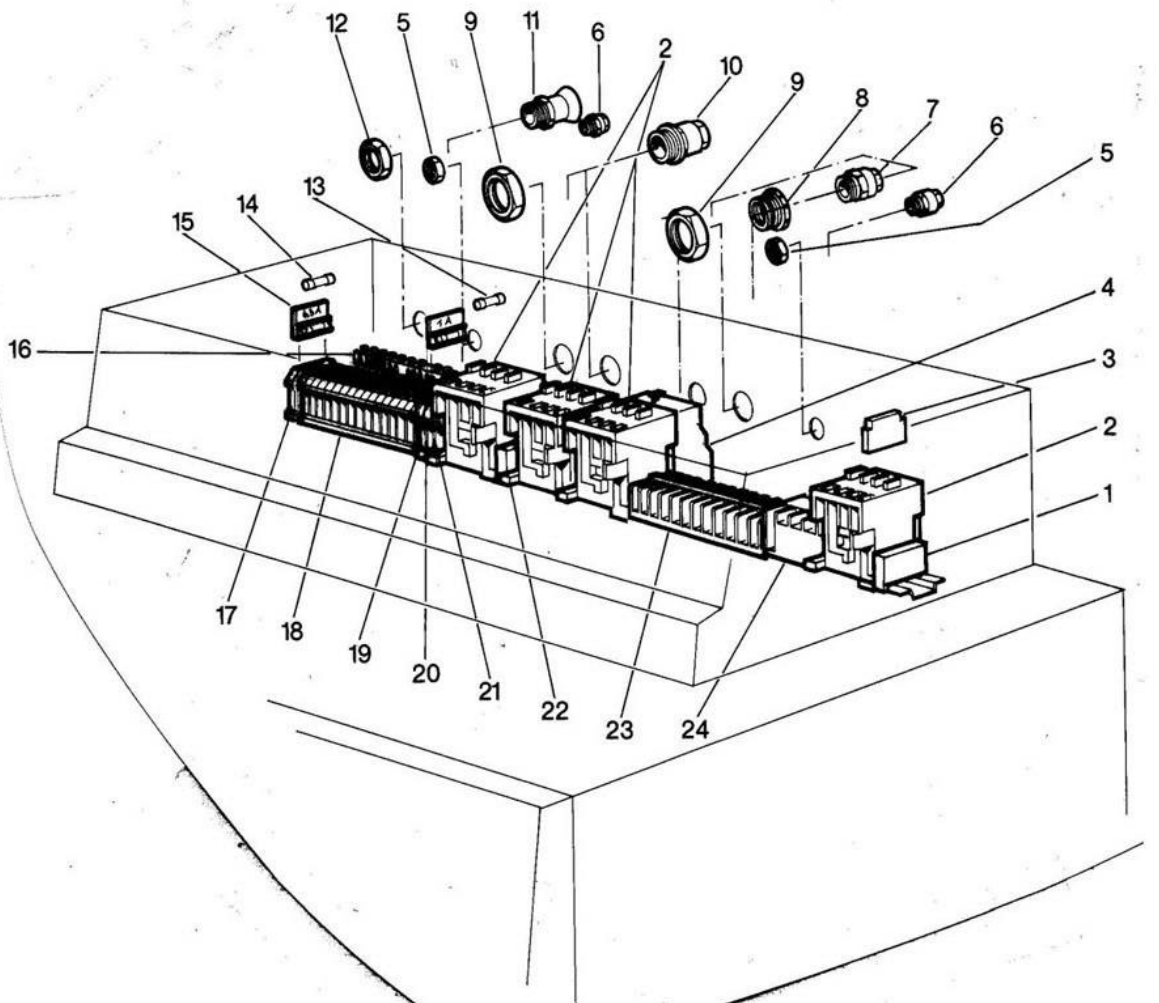
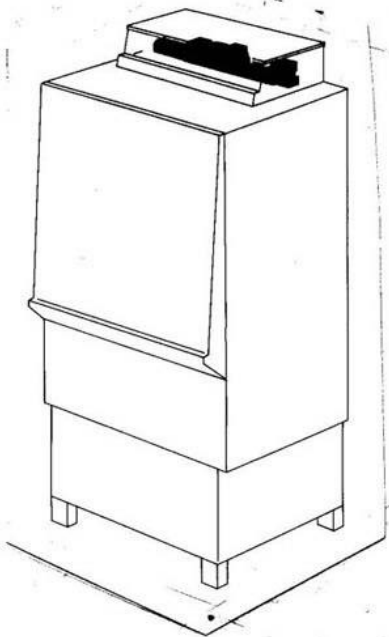






### GR 62

### Elektroteile III Electrical parts III Matériel électrique III



**GR 62**

Electrical parts III

Pos.	Designation	Part no.	Pc.	Notes
1	Delay relay	31 13 066		
2	Contactora 220 V 50 Hz	31 04 161	4	
3	Auxiliary switch	31 04 166		
4	Overload relay 5,2 - 7,5 A	31 04 193		
5	Hexagon nut PG 9	31 10 043	3	
6	Cable gland PG 9	31 10 042	3	
7	Cable gland PG 16	31 10 049	3	
8	Reducer PG 21 / PG 16	31 10 090	2	
9	Hexagon nut PG 21	31 10 071	3	
10	Cable gland PG 21	31 10 070		
11	Cable clamp PG 16	31 10 049		
12	Hexagon nut PG 16	31 10 110	3	
13	Fuse 1 Amp. 250 V	31 11 039	4	
14	Fuse 6,3 Amp. 250 V	31 11 043	2	
15	Fuse	31 09 072	4	
16	Earth bonding block	31 09 094		
17	Terminal block UK-SI	31 09 063	4	
18	Terminal block grey UK 10	31 09 057	10	
19	Terminal block blue UK 10	31 09 058	2	
20	Term. block green-yellow USLKG 10	31 09 059	2	
21	Terminal block	31 09 051	2	
22	RC-member 0,25 µF 220 V 50 Hz	61002141		
23	Terminal strip	31 09 025		
24	Mini contactora 220 V 50 Hz	31 04 068		
n.p.	Isolating disk T-SK	31 09 066	3	